



Power Supplies for Medical Devices

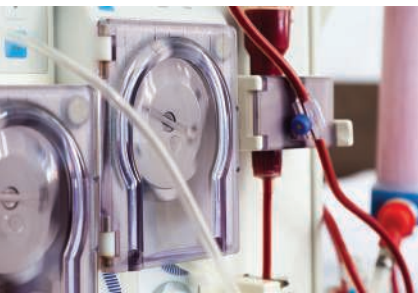
Surgical ■ Patient Monitoring ■ Imaging ■ Laboratory

POWERING CRITICAL SOLUTIONS



MEDICAL DEVICES

- SL Power has been the market leader in power solutions for medical devices for over 30 years under the Condor and Ault brand names.
- We leverage our extensive experience in various medical applications and knowledge of medical device regulatory standards in developing our standard products.
- Our product families are certified to IEC 60601-1 3rd Edition, 2x Means of Patient Protection (MOPP).
- We design our products to meet the most stringent leakage current and IEC60601-1-2 4th Edition EMC requirements for medical devices.



SL Power Electronics Standard Products



Internal Power Supplies

Our internal power supplies offer the highest convection cooling in the industry. Ranging from 20W to 500W, our power supplies meet the demands of EMI with low leakage.

External Power Supplies

Today's industrial, test & measurement and medical applications require reliable power. Available from 10W to 240W, our external power supplies can be configured to meet your precise application.



LED

With an efficiency range of 92% to 94%, SL Power's LED power products are reliable and flexible, providing long-life performance for indoor and outdoor LED lighting applications.

POE

Our Power Over Ethernet Midspan adapters meet IEEE 802.3 af/at, in power ranges from 15W to 80W, with 48Vdc or 56Vdc output.

Linear

SL Power's linear power supplies are extremely reliable and are perfect for applications requiring very low output ripple and noise.



SL Power Electronics Standard Products

EXTERNALS

Output Power (W)	Configuration		Industrial External Power Supplies		Medical External Power Supplies	
	Wall-Mount	Desktop	Model Family	Standard Voltages	Model Family	Standard Voltages
10	X	X	TE10	5, 6, 7.5, 12, 24	ME10	5, 6, 7.5, 12, 24
20	X	X	TE20	5, 6, 7.5, 9, 12, 18, 24, 48	ME20	5, 6, 7.5, 9, 12, 18, 24, 48
30	X	X	TE30	5, 12, 15, 18, 24, 48	ME30	5, 12, 15, 18, 24, 48
40	X	X	TE40	12, 18, 24	ME40	12, 18, 24
60		X	TE60	5, 12, 18, 24, 48	ME60	5, 12, 18, 24, 48
90		X	TE90	12, 15, 18, 24	ME90	12, 15, 18, 24
120		X	TE120	12, 18, 24	ME120	12, 18, 24
240		X	TE240	12, 24, 28, 48	ME240	12, 24, 28, 48

All Models are compliant to the U.S. Dept. of Energy Efficiency Level VI. All TE Series models are certified to IEC/EN/UL60950-1, 2nd Edition. All ME Series models are certified to IEC/EN/UL60601-1, 3rd Edition (4th Edition EMC.)

INTERNALS

Output Power (W)		Product Type		Output Voltages (Vdc)	Size	Features
w/Airflow	Convection	Medical	Industrial			
	55-60	MB60S	GB60S	12, 15, 18, 24, 36 (MB only), 48	2" x 3" x 1"	-10 to 80C Temp. Range, Small Size
	65	MB65S	TB65S	12, 15, 24, 48	2" x 3.5" x 1.3"	4th Ed. EMC, BF Rated, Long Life
110	80	MB110S	TB110S	12, 24, 48	2" x 4" x 1.4"	Enhanced EMC, Long e-cap life
110	80	MINT3110	CINT3110	5/±12, 5/±15, 5/±24	2" x 4" x 1.3"	Triple Output
150	100	MINT1150	CINT1150	12, 15, 24, 48, 56	2" x 4" x 1.2"	High Density
175	120	MINT1175	CINT1175	12, 15, 24, 48, 56	2" x 4" x 1.3"	PF, DCOK, I share, Inhibit, etc.
200	180		CINT1200	12, 15, 18, 24, 28, 32, 36, 48	3" x 5" x 1.22"	EN55024 Versions Available
	180	MINT1180		12, 15, 18, 24, 28, 32, 36, 48	3" x 5" x 1.22"	High Convection Power
275	180	MINT1275	CINT1275	12, 15, 24, 48, 56	3" x 5" x 1.22"	5Vsb, PF, DC OK, I share, Inhibit, etc.
425	300	MU425S	TU425S	12, 24, 48, 56	3.3" x 6.2" x 1.6"	Heavy Industrial EMC, 5V/2A Standby
500	350	MINT1500*	MINT1500	24, 48, 56	3.3" x 7.0" x 1.68"	5Vsb, PF, DCOK, I share, Inhibit, etc.

All Industrial Models are Certified to IEC/EN/UL60950-1, 2nd Edition. All Medical Models are Certified to IEC/EN/UL60601-1, 3rd Edition; 2MOPP Isolation. BF Rated version is available. Consult the factory for model numbers.

LIGHTING

Power (W)	Model	Output Voltages (Vdc)	Cooling	Max. Temp.	Size	Construction
20	LB20S	48V	Convection	70°C	2" x 3" x 1.0"	Board Mount
75	LE75S	13-27, 54-108 (CC)	Convection	70°C	2.7" x 5.9" x 4.5"	Fully Enclosed, IP67
115	LB115	12, 15, 24, 48, 56V	Convection/ Fan-cooled	70°C	2" x 4" x 1.2"	Board Mount, Optional Cooling Plate
130	LB130S	56V	Conduction	70°C	3" x 5" x 1.3"	Board Mount
150	LE150S-CD	53-107, 107-214 (CC)	Convection	70°C	3.13" x 9.4" x 1.8"	Fully Enclosed, IP67
150	LE150S-VN	24V, 48V	Convection	70°C	2.7" x 7.83" x 1.6"	Fully Enclosed, IP67
240	LB240S	48V	Convection/ Conduction/ Fan-cooled	70°C	3" x 5" x 1.3"	Board Mount, Optional Cooling Plate
200	LE200-CD	143-285 (CC)	Convection	70°C	3.13" x 9.4" x 1.8"	Fully Enclosed, IP67
300	LE300S	24, 28V, 48V	Convection	70°C	3.9" x 8.8" x 1.75"	Fully Enclosed, IP67
500	LU500S	12V, 24V, 36V*	Convection/ Fan-cooled	70°C	4" x 7.25" x 2.2"	U-channel chassis

Internal Power for Robotic Surgical Equipment

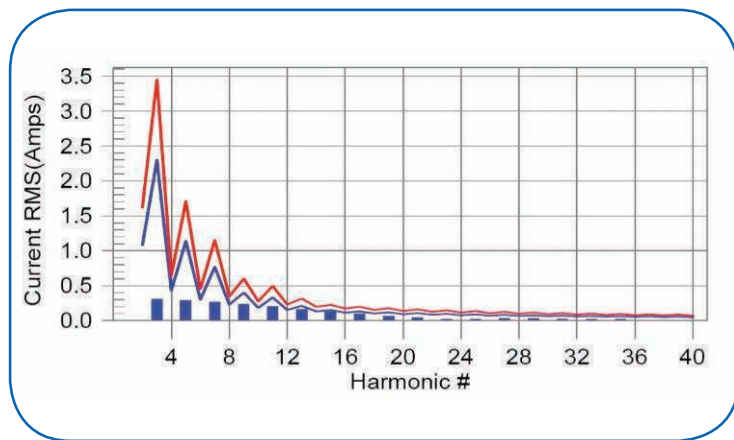


MINT1175

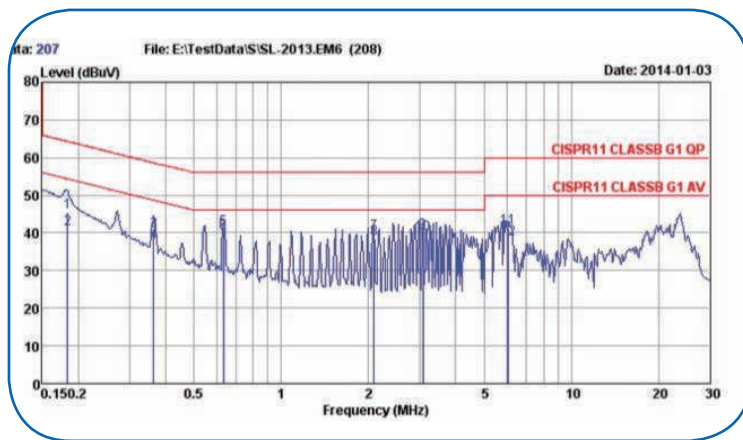
Manufacturers of robotic surgery systems trust the precise engineering of SL Power's internal power supplies. Designed to meet exacting safety and reliability specifications, SL Power's supplies feature low leakage current, 2x Means of Patient Protection and maximum convection power.

SL Power Electronics Internal Power Supplies

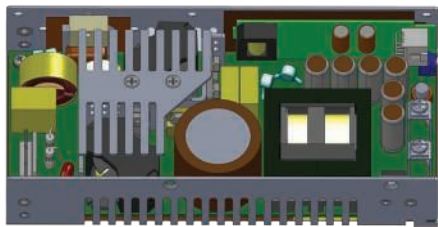
Our medical power supplies are designed to the latest IEC 60601-1 standards.



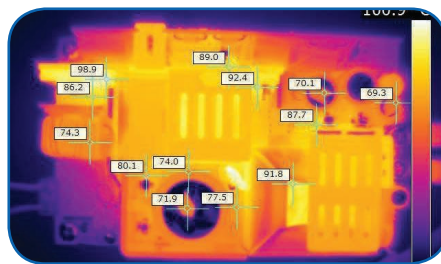
Harmonic Distortion, IEC
61000-3-2 Class A



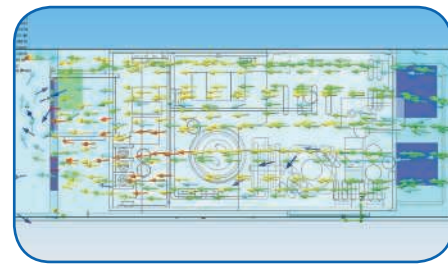
EMI Performance, CISPR11
Class B



Mechanical
Modeling



Thermal
Performance
Evaluation



Airflow
Analysis

External Power for Cardiac Monitors



Leading medical device manufacturers around the world depend on SL Power Electronics for power solutions they can trust. SL Power's external power supplies are designed to meet 2x Means of Patient Protection, 15 KV Electrostatic Discharge and global medical safety standards.

External Product Configurator

Choose Your Adaptor Type



Wall-Plug



Desktop

Choose Your Input Type



North American Plug



North American Plug



European Plug



United Kingdom Plug



Australian Plug



IEC60320 C14



IEC60320 C18



IEC60320 C8

Choose Your Output Connector



Straight Barrel Plug



6-Pin DIN Male Connector



9-Pin DIN Female Connector



Straight and Angle Barrel Plug



Locking Straight Barrel



3-Pin snap n lock Kycon



6-Pin Microfit Molex



Stripped and Tinned Leads



EIAJ #5 Style Connector

Visit SLPower.com/configurator to customize your external power supply

SL Power Electronics Sales Contacts

North America

SL Power Electronics Headquarters
6050 King Drive, Building A
Ventura, CA 93003
Phone: 800-235-5929
Fax: 805-832-6135
Email: info@slpower.com

EMEA

Sales & Engineering Office
Unit 1 (c/o Davall Gears Ltd)
Travellers Lane
Welham Green
Hatfield, Hertfordshire AL9 7JB
United Kingdom
Phone: +44 (0) 1769 581311
Fax: +44 (0) 1769 612763
Email: euinfo@slpower.com

Asia

Sales & Engineering Office
Fourth Floor Building 53
1089 North Qinzhou Road North
Shanghai, China 200233
Phone: +86 21 64857422
Fax: +866 21 64857433
Email: infor@slpower.com

Contact SL Power Electronics

North America

SL Power Electronics Headquarters
6050 King Drive, Building A
Ventura, CA 93003
Phone: 800-235-5929
Fax: 805-832-6135
Email: info@slpower.com

East Coast USA

Sales & Engineering Office
607 Neponset Street
Canton, MA 02021
Phone: 800-235-5929
Fax: 805-832-6135
Email: info@slpower.com

Europe

Sales & Engineering Office
Unit 1 (c/o Davall Gears Ltd)
Travellers Lane
Welham Green
Hatfield, Hertfordshire AL9 7JB
United Kingdom
Phone: +44 (0) 1769 581311
Fax: +44 (0) 1769 612763
Email: euinfo@slpower.com

Asia

Sales & Engineering Office
Fourth Floor Building 53
1089 Qing Zhou Road North
Shanghai, China 200233
Phone: +86 21 64857422
Fax: +866 21 64857433
Email: infor@slpower.com



North America

SL Power Electronics Headquarters

6050 King Drive, Building A
Ventura, CA 93003
Phone: 800-235-5929
Fax: 805-832-6135
Email: info@slpower.com

Europe

Sales & Engineering Office

Unit 1 (c/o Davall Gears Ltd)
Travellers Lane
Welham Green
Hatfield, Hertfordshire AL9 7JB UK
Phone: +44 (0) 1769 581311
Fax: +44 (0) 1769 612763
Email: euinfo@slpower.com

Sales & Engineering Office

East Coast USA

607 Neponset Street
Canton, MA 02021
Phone: 800-235-5929
Fax: 805-832-6135
Email: info@slpower.com

Asia

Sales & Engineering Office

Fourth Floor Building 53
1089 Qing Zhou Road North
Shanghai, China 200233
Phone: +86 21 64857422
Fax: +866 21 64857433
Email: infor@slpower.com



www.SLPower.com

Copyright © 2016 SL Power Electronics